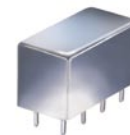


# Plug-In Frequency Mixer

## SRA-5+

Level 7 (LO Power +7 dBm) 5 to 1500 MHz



CASE STYLE: A01  
PRICE: \$29.20 ea. QTY (1-9)

### Maximum Ratings

Operating Temperature	-55°C to 100°C
Storage Temperature	-55°C to 100°C
RF Power	50mW
IF Current	40mA

### Pin Connections

LO	8
RF	1
IF	3
GROUND	2,5,6,7
CASE GROUND	2,5,6,7
NOT USED	4

### Features

- excellent conversion loss, 6.69 dB typ.
- good L-R isolation, 35 dB typ. L-I isolation, 30 dB typ.
- rugged welded construction
- hermetic

### Applications

- VHF/UHF
- cellular
- satellite distribution

**+ RoHS compliant in accordance with EU Directive (2002/95/EC)**

The +Suffix has been added in order to identify RoHS Compliance. See our web site for RoHS Compliance methodologies and qualifications.

### Electrical Specifications

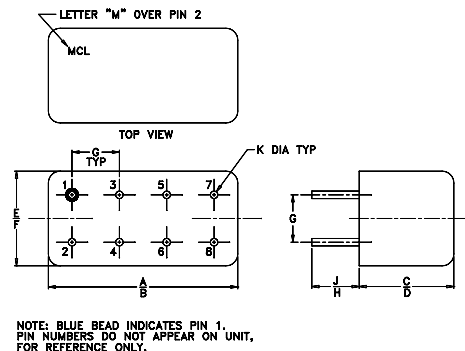
FREQUENCY (MHz)		CONVERSION LOSS (dB)				LO-RF ISOLATION (dB)						LO-IF ISOLATION (dB)					
LO/RF $f_L$ - $f_U$	IF	Mid-Band m		Total Range Max.		L		M		U		L		M		U	
		$\bar{X}$	$\sigma$	Max.	Max.	Typ.	Min.	Typ.	Min.	Typ.	Min.	Typ.	Min.	Typ.	Min.	Typ.	Min.
5-1500	10-600	6.69	.07	8.0	8.5	50	45	35	30	30	20	45	40	30	25	25	15

1 dB COMP.: +1 dBm typ.

L = low range [ $f_L$  to 10  $f_L$ ]  
m = mid band [ $2f_L$  to  $f_U/2$ ]

M = mid range [10  $f_L$  to  $f_U/2$ ] U = upper range [ $f_U/2$  to  $f_U$ ]

### Outline Drawing



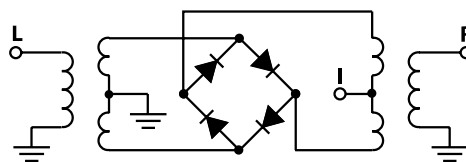
### Outline Dimensions (inch/mm)

A	B	C	D	E	F
.770	.800	.385	.400	.370	.400
19.56	20.32	9.78	10.16	9.40	10.16
G	H	J	K	wt	
.200	.20	.14	.031	grams	
5.08	5.08	3.56	0.79	5.2	

### Typical Performance Data

Frequency (MHz)		Conversion Loss (dB)	Isolation L-R (dB)	Isolation L-I (dB)	VSWR RF Port (:1)	VSWR LO Port (:1)
RF	LO	LO +7dBm	LO +7dBm	LO +7dBm	LO +7dBm	LO +7dBm
5.00	35.00	5.19	47.86	49.36	2.75	3.11
20.00	50.00	6.09	48.24	49.31	2.18	2.80
51.72	81.72	6.29	47.39	48.80	2.05	2.89
145.52	115.16	6.43	43.93	44.02	2.13	2.58
238.60	208.60	6.60	40.69	39.98	2.53	2.57
332.03	302.03	6.70	38.28	37.11	2.88	2.43
425.47	395.47	7.15	36.61	34.20	3.26	2.30
500.00	470.00	7.01	35.64	34.86	3.35	2.18
565.63	535.63	7.33	34.43	34.15	3.49	2.13
659.07	629.07	7.84	33.47	32.77	3.28	1.99
752.50	722.38	7.61	33.21	31.65	3.24	1.93
845.94	816.02	7.30	32.60	31.29	3.37	1.84
939.38	909.31	7.20	31.12	31.57	2.65	1.76
1000.00	969.82	7.11	30.45	31.53	2.54	1.67
1079.50	1049.30	7.08	30.12	31.21	2.46	1.60
1173.00	1143.00	7.05	30.51	30.75	2.33	1.50
1266.40	1236.40	7.40	32.04	29.64	2.20	1.39
1359.90	1329.80	7.48	35.34	27.77	2.11	1.32
1453.30	1423.30	7.81	36.11	32.82	2.08	1.25
1500.00	1469.90	7.78	36.51	37.91	2.32	1.24

### Electrical Schematic



# Performance Charts

## SRA-5+

